



MIMCO INC.

Commercial Real Estate Management & Investments

918 Oregon
El Paso, TX



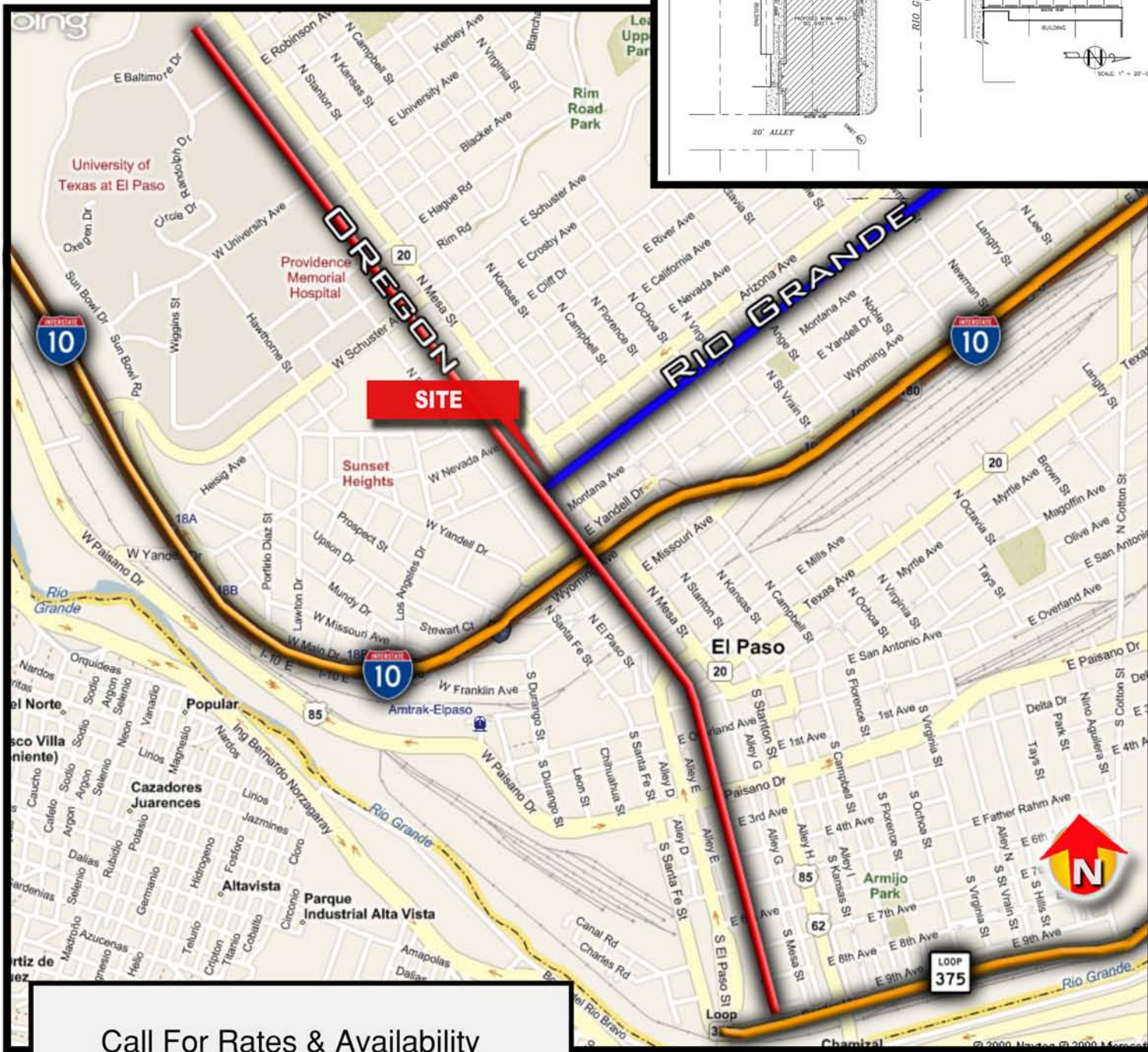
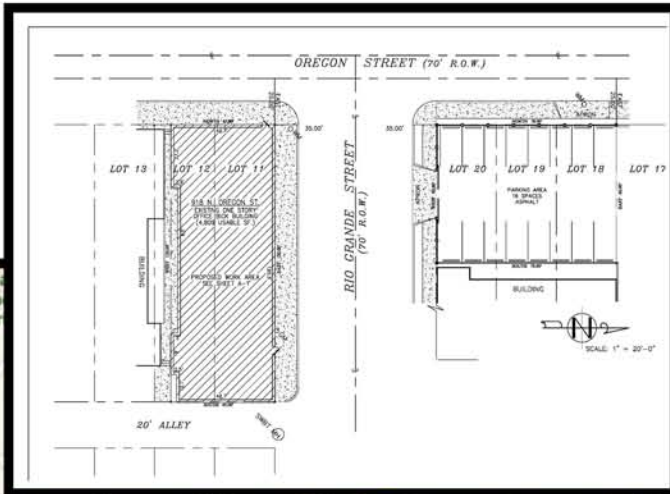
For information, please contact:
Michael Pace (915) 342-1204
mpace@mimcoelp.com
Scott Walker (915) 342-1203
swalker@mimcoelp.com
(915) 779 - 6500



www.mimcoinc.com

918 Oregon

El Paso, TX



Call For Rates & Availability

Zoning / Area	C-4/ Central		
Traffic Counts (2001 Study)	Oregon	4,784 Cars/Day	
	Rio Grande	2,441 Cars/Day	
Demographics (2009 Estimate)	1 mile Radius	3 mile	5 mile
Population	14,258	140,105	277,142
Avg. HH Income	\$59,836	\$56,744	\$51,353



For information, please contact:
Michael Pace (915) 342-1204
 mpace@mimcoelp.com
Scott Walker (915) 342-1203
 swalker@mimcoelp.com

*All information contained herein has been obtained from sources deemed reliable and is submitted subject to errors, omissions, changes of terms and conditions, prior sale, lease or financing or withdrawal without notice.

www.mimcoinc.com